

Public Document Pack



County Hall
Rhadyr
Usk
NP15 1GA

Wednesday, 20 April 2016

Notice of Reports Received following Publication of Agenda.

Strong Communities Select Committee

Thursday, 28th April, 2016 at 10.00 am,
The Council Chamber, County Hall, The Rhadyr, Usk, NP15 1GA

Attached are reports that the committee will consider as part of the original agenda but were submitted to democratic services following publication of the agenda.

Item No	Item	Pages
4.	Scrutiny of Partnerships: To consider the Partnership Mapping Exercise and the range of services that are delivered by grant-funded partners (To follow).	1 - 8

Paul Matthews
Chief Executive

This page is intentionally left blank

SUBJECT: Review the Third Sector Contribution to the Partnership Landscape in Monmouthshire.

MEETING: Strong Communities Select Committee

DATE: 28th April 2016

1. PURPOSE:

- 1.1 To provide relevant partnership information to the Strong Communities Select Committee in relation to the contribution of third sector organisations.
- 1.2 To focus on the representation, activity and delivery of third sector partners across the partnership landscape within Monmouthshire, under the direction of the Monmouthshire Public Service Board (formally Local Service Board).
- 1.3 To have an oversight of the funding provided to third sector partners.

2. RECOMMENDATIONS:

- 2.1 That the Select Committee have oversight of the partnership structure and landscape which contributes to the delivery of the Monmouthshire Single Integrated Plan, under the direction of the Public Service Board.
- 2.2 That the Select Committee review the role of the third sector and how they contribute to the Monmouthshire Single Integrated Plan.
- 2.3 That the Select Committee review with a critical eye, the representation, spread and scope of third sector organisations across the Monmouthshire partnership landscape and how well represented they are currently under the Public Service Board.
- 2.4 The Select Committee review and have a clear oversight of the funding arrangements allocated by Monmouthshire County Council to third sector organisations.

3. REASONS:

- 3.1 In 2012, the Welsh Government Statutory Guidance “Shared Purpose, Shared Delivery” rationalised the partnership landscape, by reducing complexity and duplication, and freeing up resources, through the development of Local Service Boards and the Single Integrated Plan. In April 2016, the Wellbeing of Future Generations Act came into force and the Monmouthshire Local Service Board

transitioned into a statutory Public Service Board with the responsibility of overseeing the remaining year of the Single Integrated Plan, which runs until March 2017.

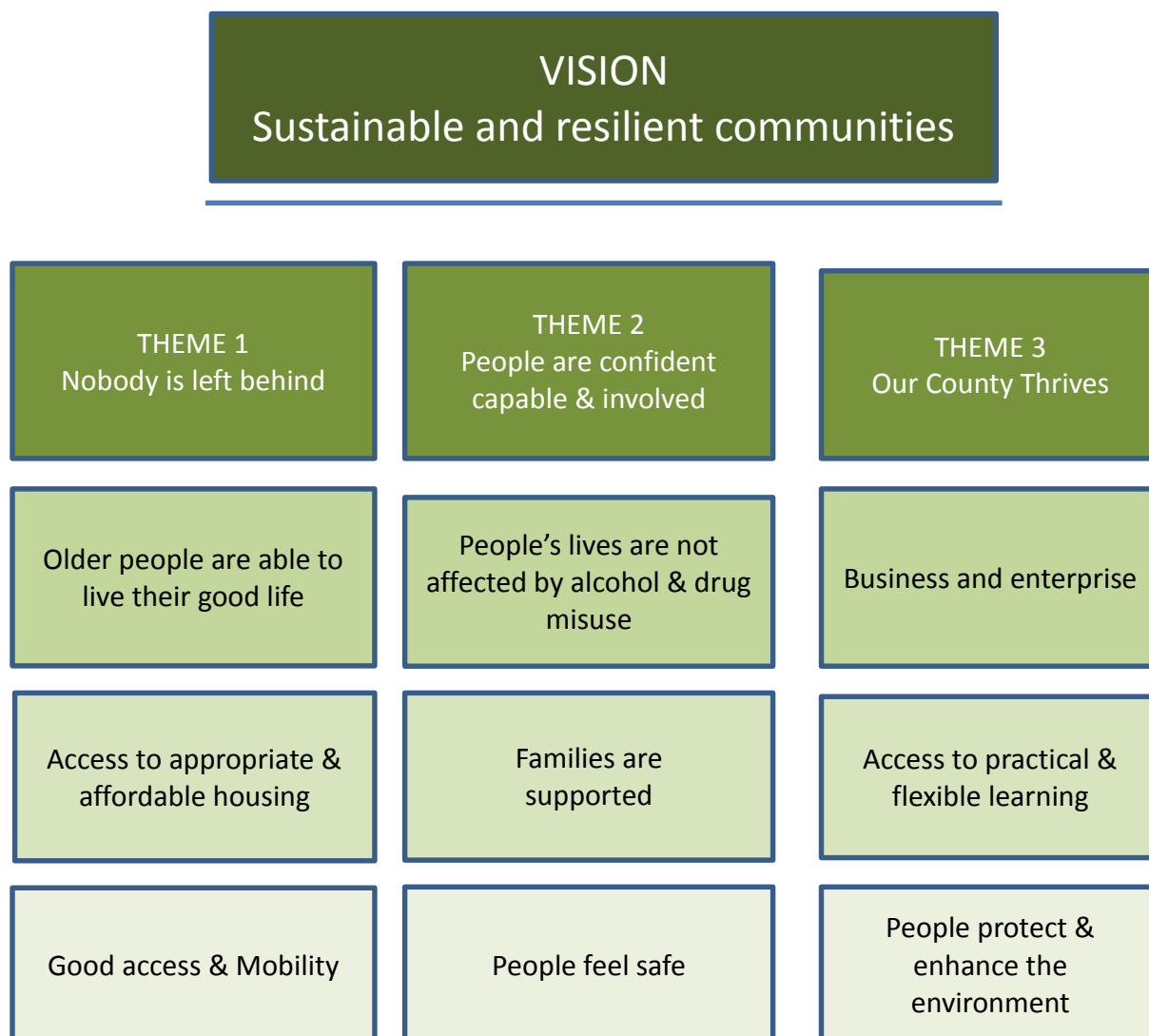
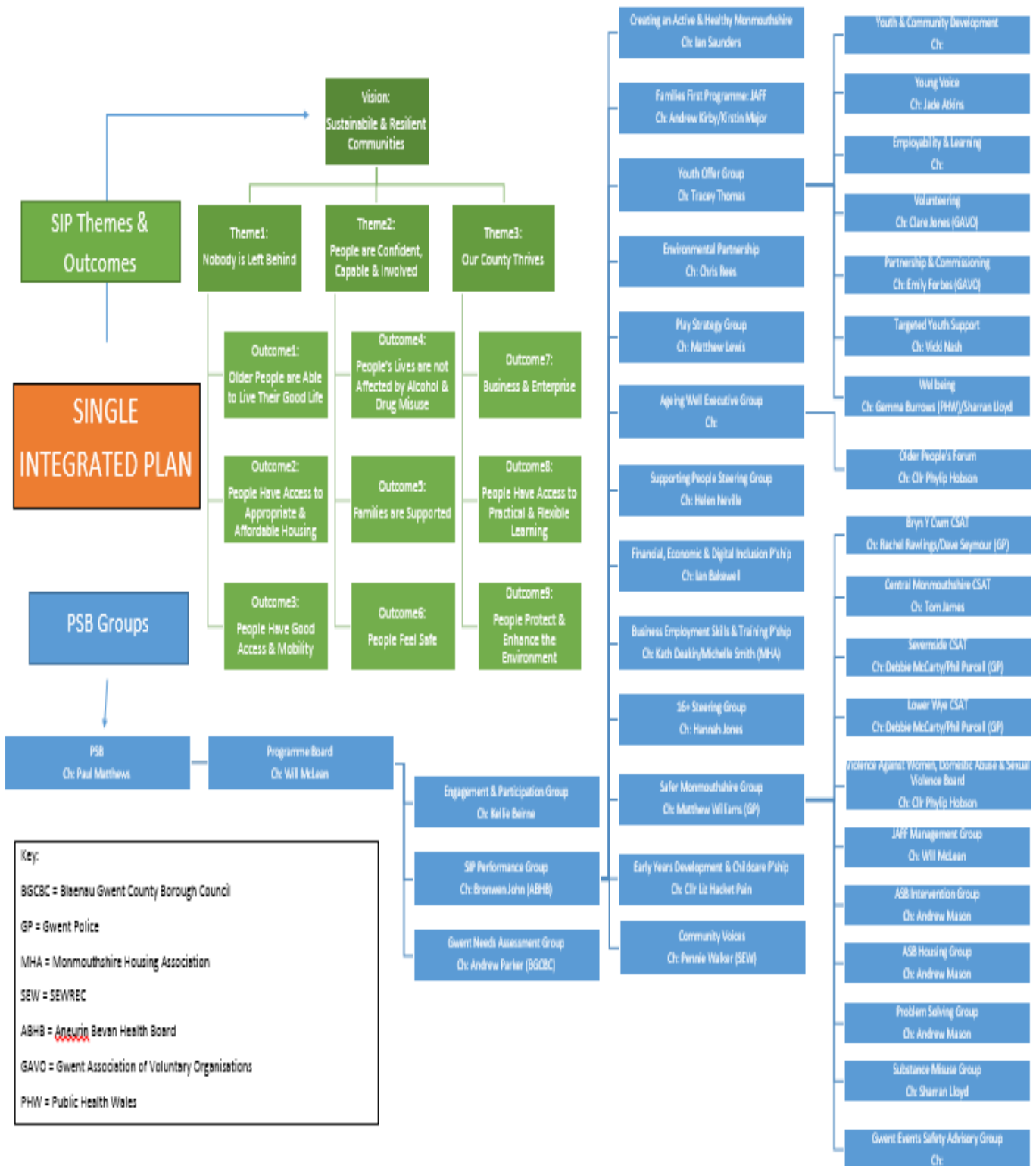


Image 1: Monmouthshire Single Integrated Plan outcomes 2013-17

3.2 Following the audit and review of the partnership landscape in 2014/15, the Strategic Partnership team concentrated on shaping the partnership landscape into a structure that was accessible to all partners. Strategic partnership groups were mapped and reviewed and this enabled us to understand the complexities of partnership arrangements, the robustness of partnership governance and how they were contributing to improving population outcomes identified in the SIP for Monmouthshire and reporting into the Public Service Board. **(Appendix A)**

Image 2: PSB & Partnership Landscape



3.3 The Partnership landscape in Monmouthshire fully embraces multi-agency working, with representation from a wide range of partner organisations, including the third sector, who work collaboratively to improve the outcomes for Monmouthshire residents. Collaboration and partnership working forms a key part of the delivery mechanism across the county, and it is important that the Select Committee have a solid oversight of this work and the contribution of our third sector partners in this wide and varied landscape. **(Appendix B)**

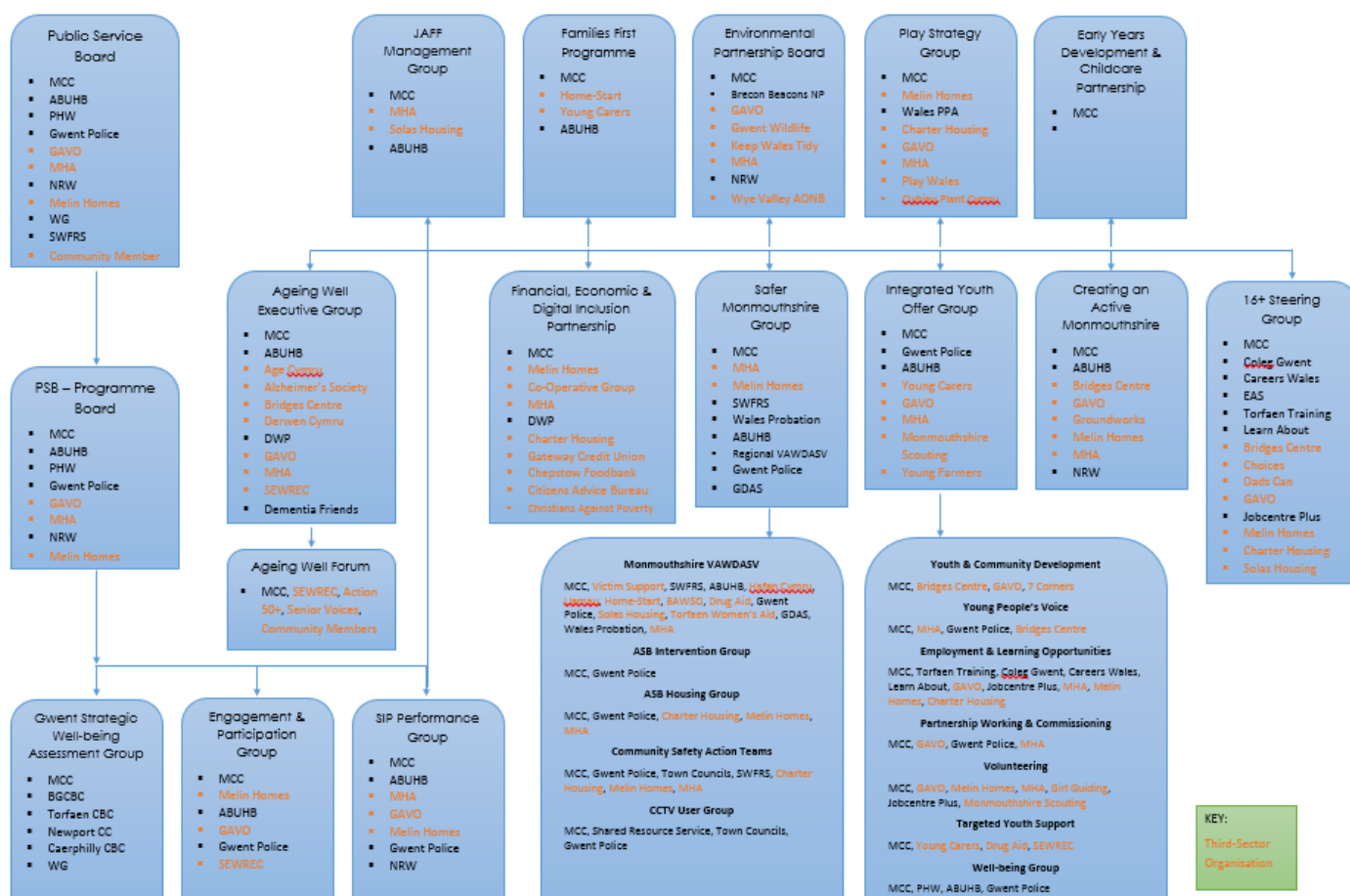


Image 3: Partnership group membership, with third sector organisations highlighted

3.4 Funding is awarded to some of our third sector partners, who contribute towards the outcomes of the Monmouthshire Single Integrated Plan. This funding is as follows:

Organisation	Project	Amount 2016/17
GAVO	Third Sector Compact	£12,000
Citizens Advice Bureau	Advice Service	£57,105
Home Start	Families Programme	First £31,000
Crossroads, Carers	Young Families Programme	First £50,486
Total		£150,591

4. RESOURCE IMPLICATIONS:

The Strategic Partnership team, currently manage the partnership landscape and the relationships with the partners under the Public Service Board.

5. SUSTAINABLE DEVELOPMENT AND EQUALITY IMPLICATIONS:

There are no implications at this review stage.

6. Appendices:

- Appendix A: Monmouthshire Public Service Board Partnership Landscape
- Appendix B: Partnership groups membership: with third sector organisations highlighted

7. BACKGROUND PAPERS:

- Monmouthshire Single Integrated Plan 2013 -17

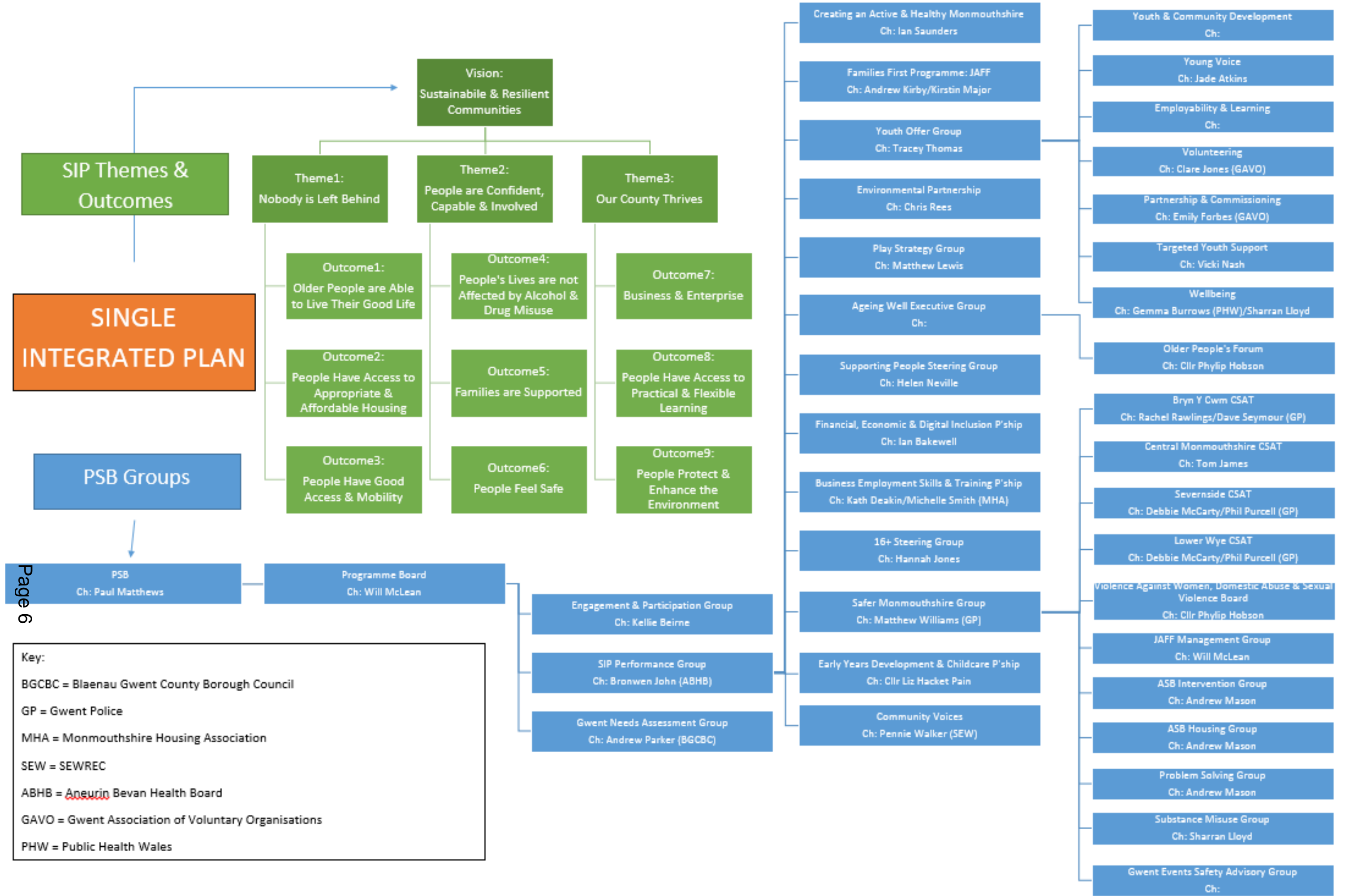
8. AUTHORS:

Sharran Lloyd, LSB/PSB Development Manager

9. CONTACT DETAILS:

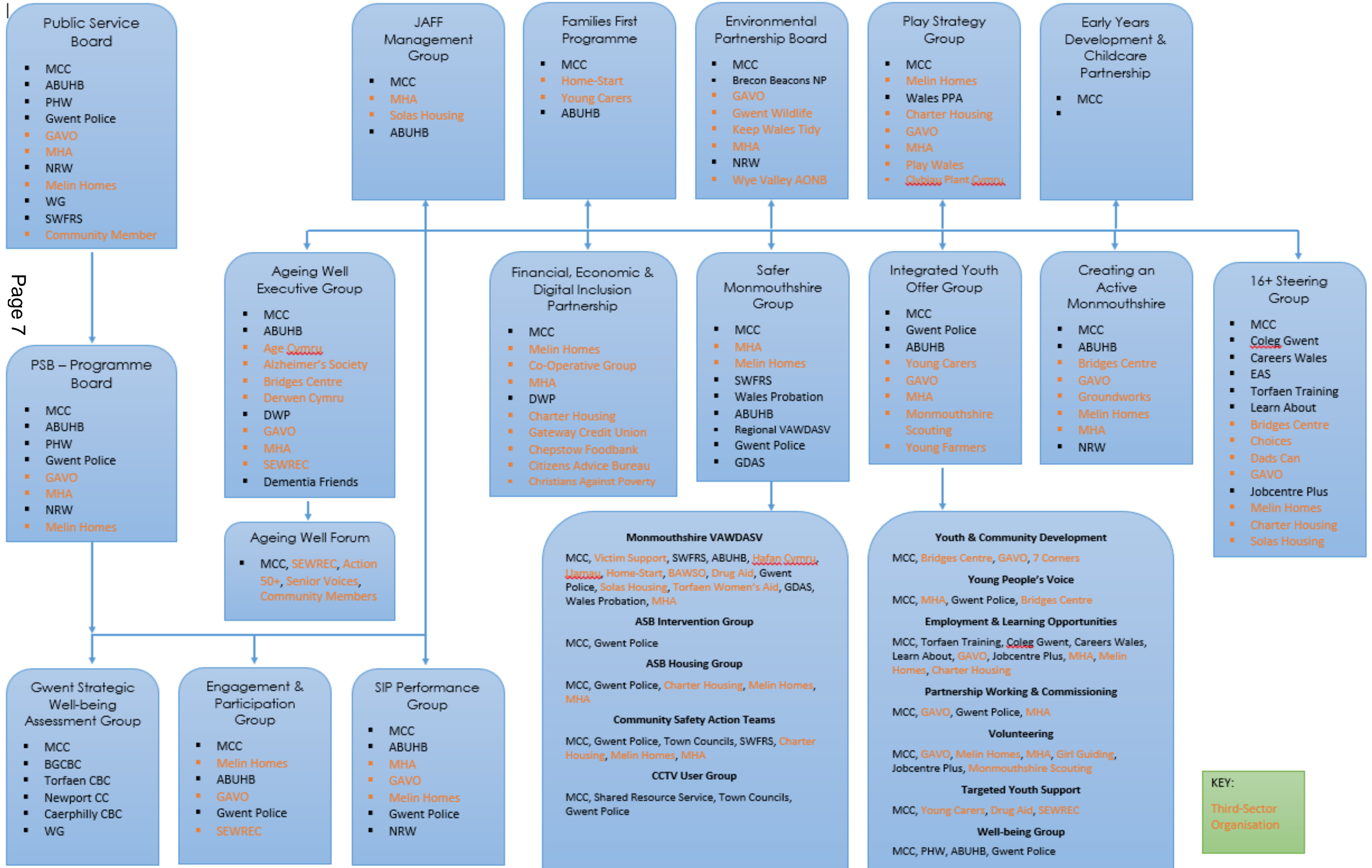
Tel: 01633 64 (4344)

E-mail: Sharranlloyd@Monmouthshire.gov.uk



Page 6

Key:
 BGCBC = Blaenau Gwent County Borough Council
 GP = Gwent Police
 MHA = Monmouthshire Housing Association
 SEW = SEWREC
 ABHB = Aneurin Bevan Health Board
 GAVO = Gwent Association of Voluntary Organisations
 PHW = Public Health Wales



This page is intentionally left blank